



Implemented by:

giz Deutsche Gesellschaft
für Internationale
Zusammenarbeit (GIZ) GmbH

Participatory Climate Change Adaptation in Informal Settlements (Greater Cairo)

Carl Philipp Schuck, GIZ



Funded By:



European Union

Implemented by:



giz Deutsche Gesellschaft
für Internationale
Zusammenarbeit (GIZ) GmbH



Ministry of Housing, Utilities
& Urban Development



PDP's Participatory Approach in Informal Settlements Upgrading in the Greater Cairo Region

- More than **60% of the population** of the Greater Cairo Region **live in informal areas**; most of them come **from rural areas** looking for job opportunities in the city
- PDP works in **9 areas in the Greater Cairo Region governorates** (Cairo, Giza and Qalyubia)
- **Objective:** improvement of the living conditions of the poor urban population in deprived informal areas through better quality of services by both public administration and civil society organizations.





Climate Change Impacts, Adaptation and Resilience in Informal Settlements

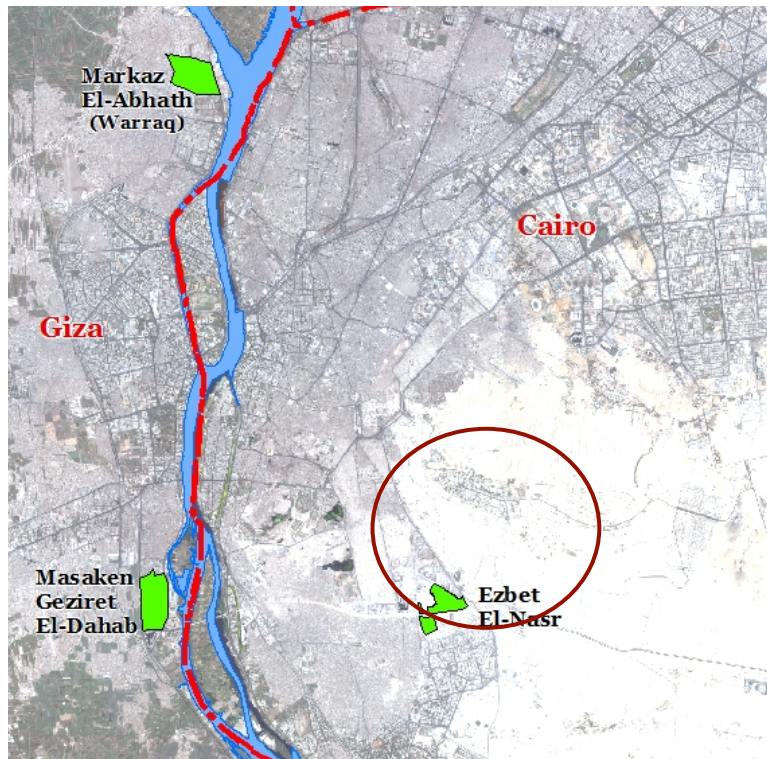
- Cairo is affected by direct impacts of climate change
 - **Heat waves** (health conditions, food security, energy consumption, tourism and infrastructure)
 - **Nile flow fluctuations** (health conditions and food security)
 - **Sea Level Rise** (migration; food security)
- Most **vulnerable areas**: *Informal settlements* due to their physical conditions (*exposure*) + residents' (un)preparedness (*sensitivity*)
- Most **vulnerable groups**: elder people, children, women, poor (weak adaptive capacity), people working in open areas (informal areas)



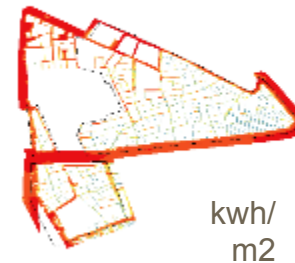
Implemented by:

giz Deutsche Gesellschaft
für Internationale
Zusammenarbeit (GIZ) GmbH

Climate Change Impacts, Adaptation and Resilience in Informal Settlements

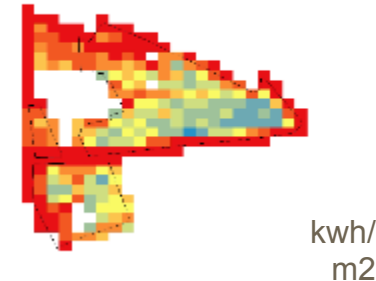


Solar Radiation
Streets (20cm)

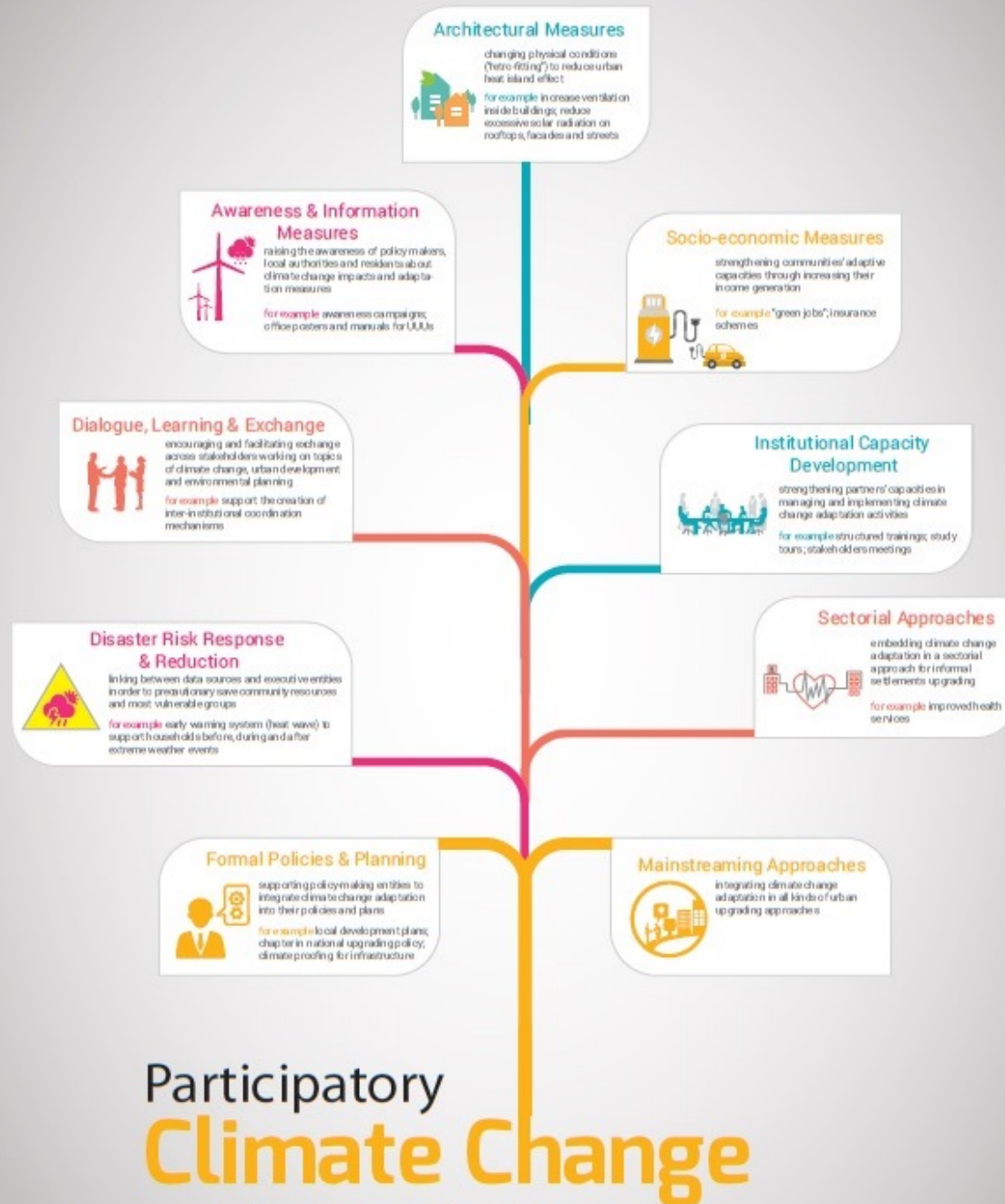


Solar Radiation
(summer) on
streets (20x20cm),
Ezbet El-Nasr

Solar Radiation
Streets (50m)



Solar Radiation
(summer)
on streets
(50x50m), Ezbet El-
Nasr



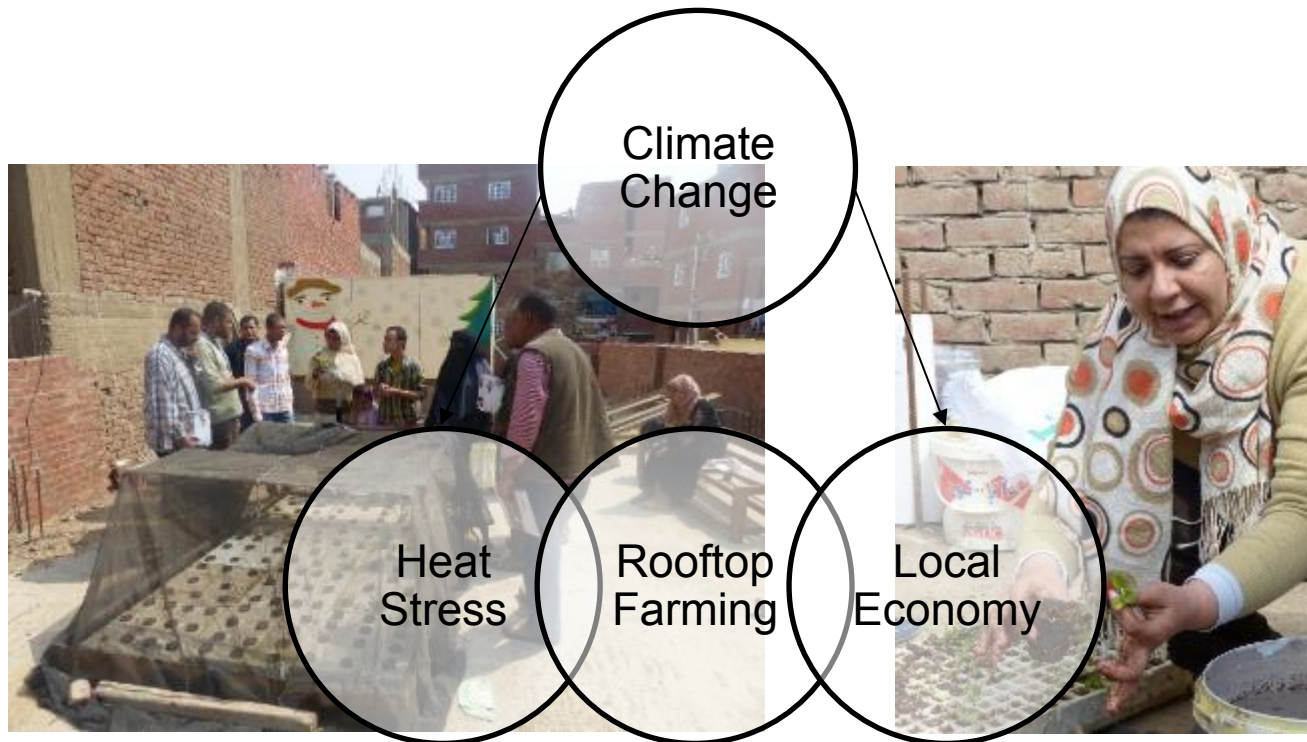
Adaptation in Informal Settlements in the Greater Cairo Region



Implemented by:

giz Deutsche Gesellschaft
für Internationale
Zusammenarbeit (GIZ) GmbH

Rooftop Farming Pilot Project in Ezbet El-Nasr





Implemented by:

giz Deutsche Gesellschaft
für Internationale
Zusammenarbeit (GIZ) GmbH

Opportunities for Inter-institutional Exchange on Climate Change Adaptation to Sustain the Approaches

Study Tours

National and local forums, committees, etc.

International networks



metropolis ●

WORLD ASSOCIATION OF THE MAJOR METROPOLISES
ASOCIACIÓN MUNDIAL DE LAS GRANDES METRÓPOLIS
ASSOCIATION MONDIALE DES GRANDES MÉTROPOLIS

PIONEERED BY THE
ROCKEFELLER FOUNDATION

